



**TEMPEST**  
lighting inc.

*TEMPEST LIGHTING HAS DEVELOPED A GROWING RANGE OF ACCESSORIES THAT MAKE*

*PHILIPS COLOR KINETICS LED LIGHTING FIXTURES EVEN MORE ATTRACTIVE TO USE.*

*WHETHER YOU NEED TO MOUNT A GRAZE FIXTURE ON A WALL, POP A SIMPLE LOUVER ON A BLAST, UPLIGHT A TREE, OR EVEN LIGHT A MOVIE, TEMPEST HAS THE ACCESSORIES YOU NEED.*

*THIS LINE IS EXPANDING ALL THE TIME, SO IF YOU DON'T SEE WHAT YOU NEED IN THIS CATALOG, CALL US - WE MAY WELL BE WORKING ON IT!*



**Color Kinetics LED Lighting Accessories**

October 2009

## Accessory

### Reach Architectural Accessory Holders



#### For:

All Reach fixtures



#### Description

To eliminate glare from Reach fixtures in architectural applications, all you need is an Architectural Accessory Holder, and your preferred accessory. These holders come with a screw-down plate to retain the accessory securely, and are available with or without Data Enabler mounting location.

Accessory holders screw onto the holes provided on the front of the Reach fixture, and may be used in conjunction with Color Kinetics beam-shaping lenses and lens gaskets.

See Accessories below...

*Tempest does NOT recommend the use of the Barndoor accessory in architectural applications, since it will be prone to movement and dislocation in heavy winds.*

#### Ordering Information

4700.AR	Reach Architectural Accessory Holder
4700.AD	Reach Architectural Accessory Holder, with Data Enabler mounting location
4700.AX	Reach Architectural Accessory Holder, with Data Enabler mounting location and Data Enabler

### Reach Film & TV Production Accessory Holders



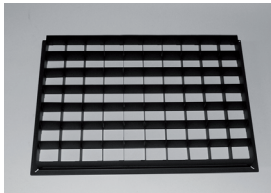
All Reach fixtures



Generator? What generator? I'm using Reach fixtures at 270 watts, where I used to use 2Ks and 5Ks! And it's Tempest's accessory kits that make it possible. Each kit comes with a tubular yoke with a TV Pin and a heavy-duty molded locking knob. Two accessory slots allow you to combine egg crates, hats and even Barndoors with correction filter frames. And the flat bases mean you can set them down between shots, and stack them on a shelf or in a truck. Very practical.

4700.TR	Reach Production Accessory Holder
4700.TD	Reach Production Accessory Holder, with Data Enabler mounting location
4700.TX	Reach Production Accessory Holder, with Data Enabler mounting location and Data Enabler

### Reach Egg Crate



All Reach fixtures



The best and simplest way to eliminate glare from Reach fixtures. The Reach Egg Crate may be nested inside a High Hat or Half Hat, to combine glare and scatter reduction, in a single accessory slot.

4710.EC	Reach Egg Crate
---------	-----------------

### Reach Half Hat



All Reach fixtures



Combine with the Egg Crate or use alone for scatter reduction top or bottom of the beam.

4720.HH	Reach Half Hat
---------	----------------

## Accessory

### Reach High Hat



#### For:

All Reach fixtures



#### Description

Combine with the Egg Crate or use alone for scatter reduction all around the beam.

#### Ordering Information

4715.HH Reach High Hat

### Reach Barndoor



All Reach fixtures



This 8-leaf Barndoor allows unequal masking on all four sides, with minimal leakage between blades.

*Note: due to the rectangular shape of the fixture face, this barndoor does not rotate. Not recommended for architectural applications.*

4725.BD Reach Barndoor

### Reach Filter Frame



All Reach fixtures



Use the filter frame with iW and eW Reaches for colors or correction, or add diffusion to any Reach. The Filter frame slides into the rear accessory slot, leaving the front slot free for egg crates, hats or barndoors.

4730.GF Reach Filter Frame

### Reach Locking Knob



All Reach fixtures



Take it as a spare, or use it with any Reach fixture for easier, faster lockoff. This hefty molded knob comes with a non-slip friction washer for a positive lock.

4700.RK Reach Locking Knob and Friction Washer

### Blast Egg Crate



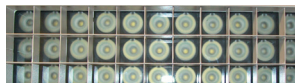
All Blast Power-core fixtures



This handy louver slips over the body of the Blast fixture and secures to the back with two stainless steel screws.

Because the egg crate cells fit around the LEDs, there is no light loss with these accessories.

4750.EB Blast Egg Crate, Black  
4750.EW Blast Egg Crate, White



### Blast Top Hat



All Blast Power-core fixtures



The Top Hat is an Egg Crate with higher sides, to eliminate scatter as well as glare.

4750.TB Blast Top Hat, Black  
4750.TW Blast Top Hat, White

## Accessory

### Blast Ceiling Pans



#### For:

All Blast Powercore fixtures



#### Description

These trims sandwich between the Blast and the ceiling box to turn any Blast Powercore fixture into a powerful recessed downlight or wallwasher.

And there's a rimless version for minimal visual impact, that can be used in either 1/2" or 5/8" drop or hard ceilings.

Use the regular ceiling pans (illustrated) for downlight and wall-washing, and use the square pans to allow a degree of rotation for lighting objects below the ceiling.



#### Ordering Information

4755.RW	Blast Ceiling Pan, White
4755.RB	Blast Ceiling Pan, Black
4755.SW	Blast Ceiling Pan, Square, White
4755.SB	Blast Ceiling Pan, Square, Black
4755.RM	Blast Rimless Ceiling Pan, White

#### Ceiling Cutouts

4755.RW/B	14.75" x 10.25"/375 x 260mm
4755.SW/B	14.75" x 14.75"/375 x 375mm
4755.RM	14.5" x 10.5"/368 x 268mm

### Blast Tree Belts



All Blast Powercore fixtures

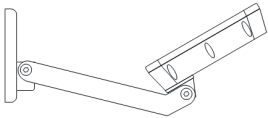


Blast Tree Belts cinch easily around any tree, and support up to four Blast Powercore fixtures. Available in three sizes, these belts are made of corrosion-resistant stainless steel. Belts may be easily let out as trees grow.

Each belt comes with one Fixture Plate, complete with round aluminum box for fixture mounting. Connect to supply and from box to box using exterior grade flexible conduit.

4745.12	Blast Tree Belt for trunk diameter 8-18"/20-40cm. Includes one fixture mounting kit.
4745.18	Blast Tree Belt for trunk diameter 14-24"/35-61cm. Includes one fixture mounting kit.
4745.24	Blast Tree Belt for trunk diameter 20-30"/50-76cm. Includes one fixture mounting kit.
4745.BX	Blast Tree Belt Fixture Mounting Kit (order one for each additional fixture required)

### Blast Standoff Arms



All Blast Powercore fixtures



Standoff Arms insert between the Blast Fixture and its base, allowing the fixture to be mounted on a wall with an offset, allowing wall-washing without any special architectural detail.

Standoff Arms are available in three lengths (or call us with custom requirements), and in black or white. Construction is 0.125"/3mm aluminum, with a choice of matching black or off-white textured epoxy powder finishes.

4704.AB	Blast Standoff Arm, 4", Black
4704.AW	Blast Standoff Arm, 4", White
4708.AB	Blast Standoff Arm, 8", Black
4708.AW	Blast Standoff Arm, 8", White
4712.AB	Blast Standoff Arm, 12", Black
4712.AW	Blast Standoff Arm, 12", White

#### Note:

4" = 10cm
8" = 20cm
12" = 30cm

## Accessory

### Blast Pipe Clamps



### For:

All Blast Power-core fixtures



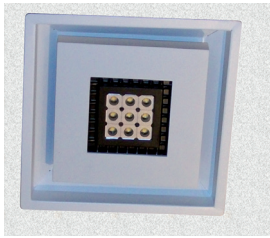
### Description

Pipe clamps provide an easy way to rig Blast and Burst fixtures on pipes and trusses. Made of zinc-plated steel, they are available for either 1.25" (32mm) or 2" (51mm) OD pipe.

### Ordering Information

4702.P1	Blast Pipe Clamp. 1.25"/32mm OD pipe, 2"/50mm offset
4702.P2	Blast Pipe Clamp. 2"/50mm OD pipe, 2"/50mm offset
4712.P1	Blast Pipe Clamp. 1.25"/32mm OD pipe, 12"/300mm offset
4712.P2	Blast Pipe Clamp. 2"/50mm OD pipe, 12"/300mm offset

### eW Downlight Power-core Ceiling Pan



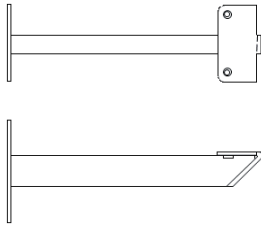
eW Downlight Powercore



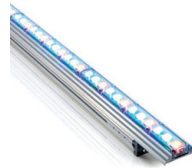
So now we're talking recessed surface-mount Downlight, OK? Just pop this handy trim between the downlight and a recessed ceiling box, and now it's flush with the ceiling! Rimmed and rimless versions available. The rimless trim may be used with either 1/2" or 5/8" ceilings.

4755.SW	eW Downlight Ceiling Pan, White
4755.SM	eW Downlight Rimless Ceiling Pan, White

### Graze Standoff Arms



All Graze fixtures



Available in 4", 8", 12" and custom lengths, these sturdy steel brackets fix to any wall, and provide convenient mounting points for the Graze mounting hinges.

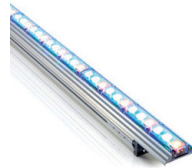
Graze standoff arms are sold in pairs, complete with mounting hardware. They are hot-dip galvanized, then powder-coated with an attractive titanium metallic finish.

4781.04	Pair 4"/10cm Graze Standoff Arms
4781.08	Pair 8"/20cm Graze Standoff Arms
4781.12	Pair 12"/30cm Graze Standoff Arms

### Graze Glare Masks



All Graze fixtures

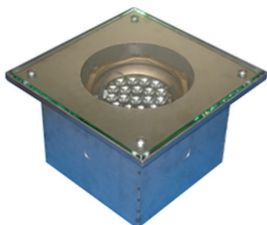


These Glare masks fix to the face of the fixture, and conceal the light source when viewed from the side or below. Available in all Graze lengths.

Masks are brushed and finished with a clear chemical film plate for corrosion resistance. Plating doubles as a paint primer if required.

4771.GM	12"/30cm Graze Glare Mask Kit
4772.GM	24"/60cm Graze Glare Mask Kit
4773.GM	36"/90cm Graze Glare Mask Kit
4774.GM	48"/120cm Graze Glare Mask Kit

### C-Splash In-grade Enclosure



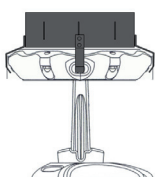
C-Splash



In-grade walkover flow-through enclosure for C-Splash submersible fixtures. This enclosure is made from stainless steel and has a 3/8"/10mm tempered glass window.

3500.CS	C-Splash In-grade Enclosure
---------	-----------------------------

### C-Splash Louver



C-Splash



This stainless steel louver is finished in a flat black powder coat, and clips on to the face of the fixture. Stainless steel is isolated from the bronze fixture body with rubber bumpers to prevent corrosion between the metallic surfaces underwater.

3510.CL	C-Splash Submersible Louver
---------	-----------------------------



---

**Tempest Lighting, Inc.,**  
5401 Bevis Avenue, Sherman Oaks, CA 91411, USA  
[www.tempestlighting.com](http://www.tempestlighting.com) [info@tempestlighting.com](mailto:info@tempestlighting.com)  
t: +1 818 787 8984  
f: +1 818 787 4994

*In the interest of continuous product improvement,  
specifications are subject to change without notice*