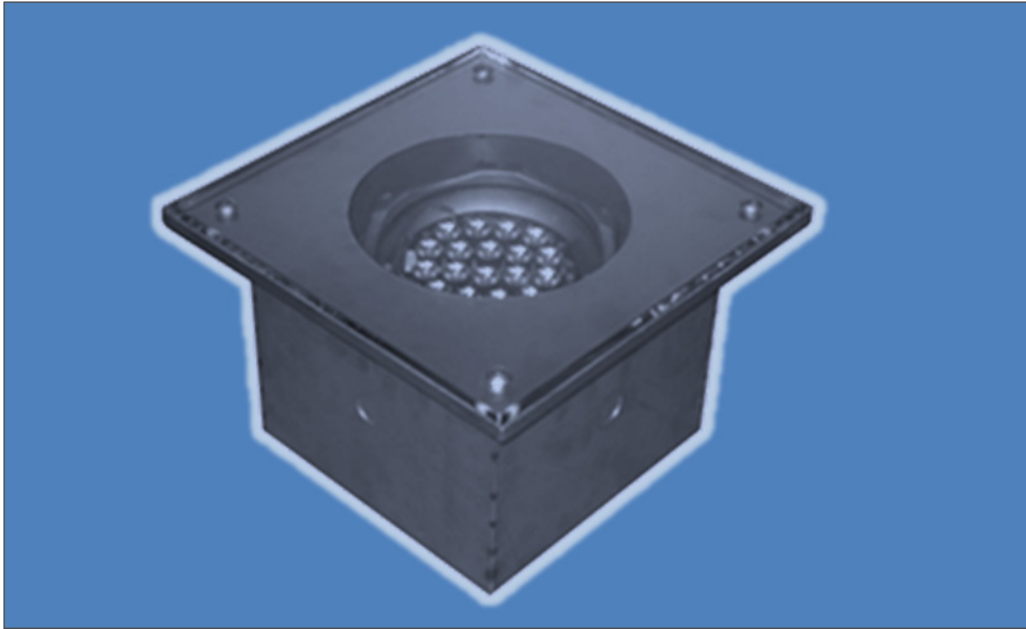


C-Splash In-Grade Enclosure



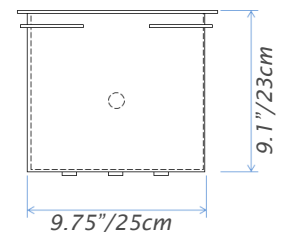
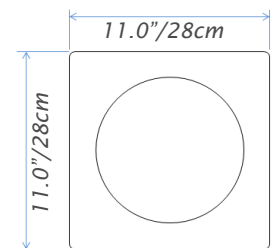
The new C-Splashes are just so bright you want to use them everywhere! Now you can - just plant this stainless Steel in-grade in dirt or concrete, and you can light up trees and buildings from below without having to worry about flooding. Very cool.

For Use with:
Philips Color Kinetics C-Splash fixtures

This enclosure is entirely made from stainless steel, and has a 3/8"/10mm tempered glass walkover cover. The flow-through design allows some air circulation to keep the fixture cool, and drainage, for maximum light output.

C-Splash in-grade enclosures may be used under water, and a concrete pour version is available, coated with plumbers' tape to protect the stainless steel case from chemicals in the concrete.

Once installed, the cover may be opened from above with a screwdriver, for easy access to the C-Splash fixture.



C-Splash In-grade enclosures should be installed on a bed of gravel for best drainage.

Part Number	Description	✓
3500.CS	C-Splash In-grade Enclosure, dirt	
3500.CC	C-Splash In-grade Enclosure, concrete pour	

Job Name	
Location	
Architect	
Designer	

In the interest of continuous product improvement, specifications are subject to change without notice